



# Computing Workstations



A COMPLETE SOLUTIONS COMPANY

FOR MORE INFORMATION

Kris Mathesen

888-345-8511

kmathesen@elliottdata.com

<https://www.healthcare.elliottdata.com>

# Meet Trio.

## Your newest partner in patient care.

Capsa Healthcare is proud to introduce our newest generation point-of-care platform...the Trio™ Mobile Computing Workstation.

The Trio Computing Workstation is a design blend of the most innovative and most reliable computing carts ever offered. Trio offers a refined, ergonomic design style coupled with innovative advances in ease of use, maneuverability, and power system runtime. And Trio is fully supported by the partner you trust, Capsa Healthcare.





HEALTHCARE

# Superior ease of use, flexibility, and performance.

## PERSONAL ERGONOMICS

- Simple ergonomic adjustments of the work surface, keyboard, and monitor allow users to position for ideal comfort

## MANEUVERABILITY

- A slim workstation profile, lightweight design, and N-Stride steer assist make each step a little easier

## POWER

- NEW GoLife™ scalable power platform to match your run-time requirements and provide workflow options

## CONVENIENCE


- Smart accessories coupled with a range of medication and supplies storage options streamline med prep and common workflows

## SUPPORT

- We've got your back 24/7. Capsa's technical support teams will partner with you to ensure maximum uptime

Elevating performance,

**every day.**

 *Capsa Healthcare has been a market leader for over 50 years through inventive product design and commitment to customer support.*

# Simple to Use



## ▼ Trio™ helps you throughout your shift.

Capsa Healthcare has refined the design of the most-proven computing cart platforms ever built, and taken the “no hassle factor” functionality to the next level with Trio. It’s simple to use with thoughtful tools built-in to facilitate workflow, save time, and support an efficient clinical process. ►





## For IT Team

### NO HASSLE FACTOR!

- Trio takes the potential of dissatisfied users off the table and puts the assurance of proven performance in your corner

### FLEET MANAGEMENT

- Trio offers a modern version of our proven N-Sight Fleet Management software to improve asset utilization, maximize fleet performance, and identify potential issues before they impact clinicians

### STANDARDIZATION

- Trio is so adaptable that it can be the ONE platform to take on the varied applications of computing workstations across your facility

### TRUSTED SUPPORT

- Trio is very serviceable for common maintenance, but it's our commitment to support and service that has our customers staying with us through the years

## For Nursing Team

### SIMPLE TO USE

- An intuitive control center provides simple touch screen navigation to a host of informative tools and personal "memory" presets for optimal user comfort

### MAXIMUM UPTIME

- Extended runtimes allow clinicians to focus on care, without worrying about running out of power during their shift

### BREEZE TO MANEUVER

- Trio is simple to move because of its light weight, premium casters, and the N-Stride steer assist feature, standard with every cart

### CONFIGURABLE

- Trio can be configured to fit the requirements for an array of care applications, medication management, and procedure support

# Superior Agility



## ▼ Trio™ moves with you.

Providing clinicians with an intuitive and satisfying user experience to compliment their care routine is at the heart of the Trio platform's design. With a keen focus on ergonomics, profile and weight, we designed a workstation that sets a new bar for simple maneuverability. ►



## Simple maneuverability

### PERSONAL ERGONOMICS

- Personally adjustable for optimal user comfort including height adjustments and 'memory' presets that are stored in your user profile and transfer to any cart you log into

### N-STRIDE™ STEER ASSIST

- N-Stride minimizes user strain when pushing the cart through hallways; just engage the handle trigger and it's smooth sailing

### WORKSTATION AGILITY

- A smaller overall profile than comparable alternatives and a reduction in cart weight promote a new standard in mobile simplicity





# Intuitive Power



## ▼ Trio™ powers you through your day.

The NEW GoLife™ power platform is a flexible, hybrid power system built on proven technology that allows your facility to choose an option that suits your runtime needs, from short sprint requirements up to 24/7 uptime. ►



# Power options

## SCALABLE POWER SYSTEM

Trio offers flexible, scalable power options, all with safe, proven lithium iron phosphate technology to meet whatever runtime your facility may need.

The NEW GoLiFe™ power platform offers a choice of stand-alone in-base power of 20, 40, or 50 amp hours. And in-base power can be combined with the GoLiFe swappable battery to provide over 30 hours of runtime.

- **20 amp base power** for lightweight, light duty applications, provides 8-1/2 hours of runtime at 30 watt average usage
- **40 amp base power** for medium duty applications, provides 17 hours of runtime at 30 watt average usage
- **50 amp base power** for higher capacity and longer runtime requirements, provides almost 22 hours of runtime at 30 watt average usage
- Add the 20 amp GoLiFe swappable battery to any in-base power option for extra capacity and 24/7 runtime

## POWER MONITORING

Proactively monitor power usage and battery level status through the N-Sight Fleet Management Platform. N-Sight is a robust cloud-based system that enables Hospital IT to remotely manage an entire fleet of Trio workstations.

See pages 10 and 11 to learn more about N-Sight

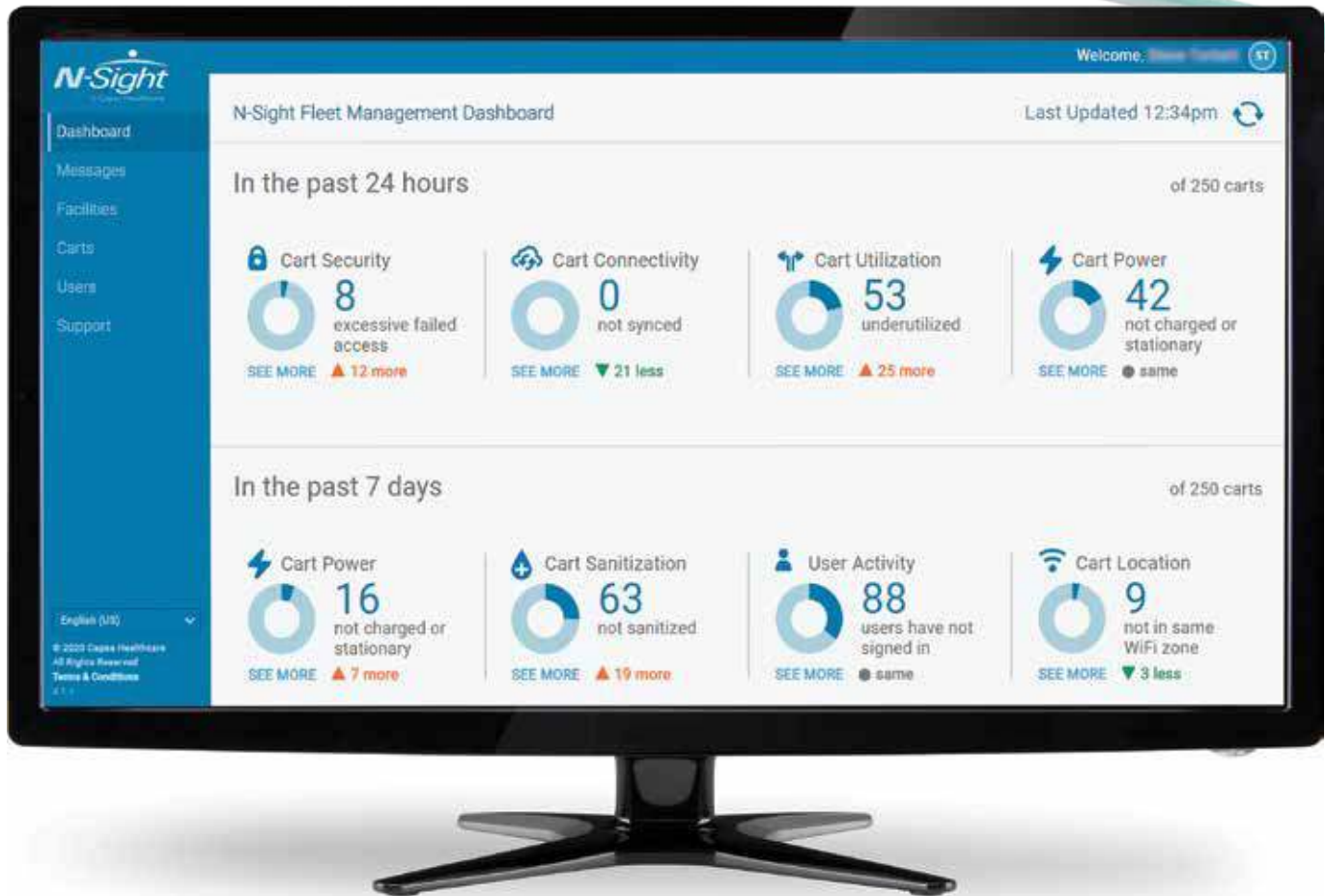


*GoLiFe™ Swappable Battery*



*Optimize Your Fleet*

# Fleet Management



▼ **N-Sight™** helps you monitor your fleet.

When it comes to software, proven and stable is a good thing. That's why we took the core of our innovative N-Sight™ Fleet Management software platform and built out the features to be responsive to today's health IT requirements. ►

# N-Sight™

The NEW cloud-based N-Sight software features enhanced analytics to support optimized fleet utilization and simplified user management tools.

We made it simple for clinicians with thoughtful tools that facilitate workflow and patient care. We then updated the software architecture to make it easy to manage, maintain, and update your cart fleet remotely.

In total, N-Sight helps facilities improve asset utilization, maximize fleet performance and value, and help prevent issues before they impact clinical workflow.

## MAXIMIZE UPTIME AND AVAILABILITY

- Maintain cart availability while proactively monitoring cart fleet power levels and performance. Analytics provide visibility into power usage and allow adjustments to technology settings to maximize cart runtime

## RIGHT-SIZE FLEET

- Evaluate cart usage patterns and peak needs to determine if the number of carts deployed meet current clinical demands. Identify opportunities to redeploy carts to locations with greater needs, optimizing asset utilization

## REMOTE FLEET MANAGEMENT

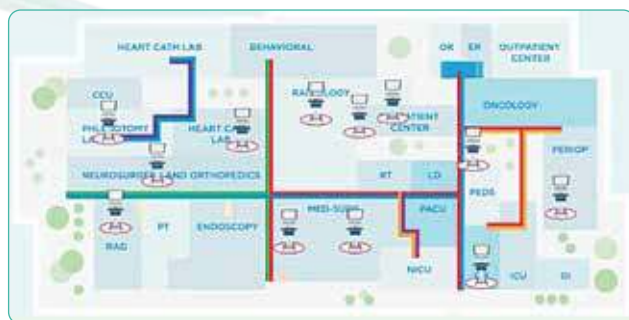
- N-Sight enables remote management of cart user groups, PIN codes, and user permissions. Save time finding lost carts with cart locator, based on the last wireless access point

## CONFIGURATION SETTINGS

- Centralized management of Trio cart configurations for displays & alerts, PINs, notifications and service requests



*Optimize Your Fleet*



*Cart Locator*



*Proactive Monitoring*

# Flexible Storage



## ▼ Trio™ adapts to your needs.

Trio supports a variety of storage options including standard bins or the new MaxBin™ system. Both are fully configurable and provide ample storage capacity to meet specific application requirements. Trio's configurable storage supports both simple and complex medication administration workflows and the highest security requirements. ►



# Storage options

## MAXBIN™ STORAGE SYSTEM

The NEW MaxBin Storage system offers an unmatched level of flexibility and security and provides ample storage for medication and supplies for any care environment. MaxBin supports both simple and complex medication administration or BCMA requirements.

- Higher capacity, more flexible storage system
- 60-74% more capacity per row than standard bins
- Full width drawers with soft-close slides
- Dual locking option for controlled medications and witness authentication
- Remote security management

## STANDARD BIN SYSTEM

Trio is configurable with a selection of standard drawers and bins in electronic locking or non-locking. Mix and match to meet your facility's workflow, storage and security requirements. Bins are available in gray or blue.

- Electric locking or non-locking drawers and bins
- Available in 2, 4 or 6 tier storage options
- Arrange your storage with a selection of bin and drawer configurations
- Available colors include NEW gray or blue
- Remote security management

See Trio's storage options on Page 14 & 15



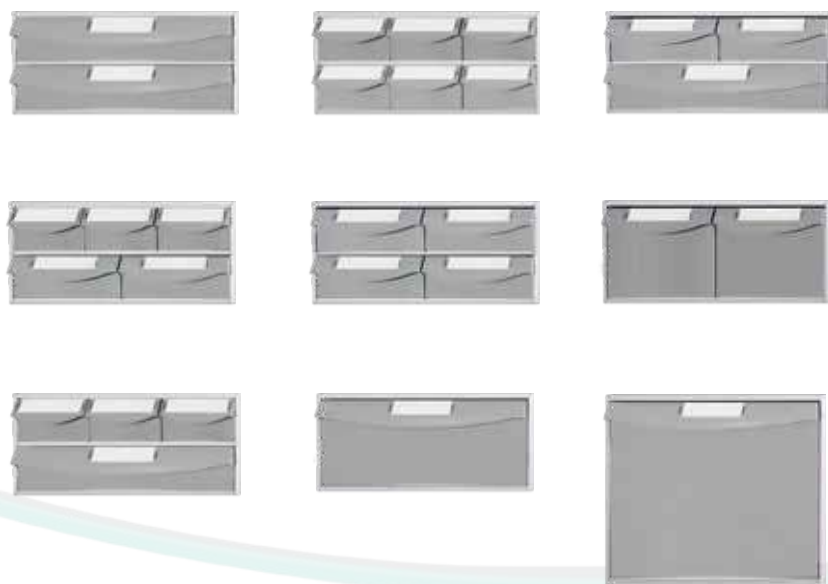
*Trio with  
Standard Bin System*

# Standard Bin System

## Standard Bin Configurations

Configure the Trio workstation with standard drawer and bin options in your choice of electronic locking or non-locking to meet specific workflow, storage and security needs. Available in gray or blue.

### Preconfigured Bin Modules



### Standard Bin Dimensions



**3.875" Small Bin**  
3.875" w x 2.375" h x 10.5" d  
(9.84 x 6.03 x 26.67 cm)



**6.375" Medium Bin**  
6.375" w x 2.375" h x 10.5" d  
(16.19 x 6.03 x 26.67 cm)



**12.75" Wide Bin**  
12.75" w x 2.375" h x 10.5" d  
(32.38 x 6.03 x 26.67 cm)



**6.375" Medium Deep Bin**  
6.375" w x 4.9375" h x 10.5" d  
(16.19 x 12.54 x 26.67 cm)



**12.75" Wide Deep Bin**  
12.75" w x 4.9375" h x 10.5" d  
(32.38 x 12.54 x 26.67 cm)



**12.75" Triple Deep Bin**  
12.75" w x 8" h x 10.5" d  
(32.38 x 20.32 x 26.67 cm)

*Trio with Standard Bins*

# MaxBin™ System

## MaxBin High Capacity Configurations

The NEW MaxBin system provides storage for medication and supplies for almost any care environment. The MaxBin's unique configurable design provides options for simple 1-tier up to expansive 3-tier designs.



*Trio with MaxBin System*

### Sample Tier Configurations



### MaxBin Dimensions



**4" Small Bin**  
4"w x 2.66"h x 11.86"d  
(10.16 x 6.75 x 30.12 cm)



**5.5" Medium Bin**  
5.5" w x 2.66"h x 11.86"d  
(13.97 x 6.75 x 30.12 cm)



**8.6" Wide Bin**  
8.6"w x 2.66"h x 11.86"d  
(21.59 x 6.75 x 30.12 cm)



**16.6" Extra Wide Bin**  
16.6"w x 2.66"h x 11.86"d  
(42.16 x 6.75 x 30.12 cm)



**16.6" Extra Wide Deep Bin**  
16.6"w x 6.15"h x 11.86"d  
(42.16 x 15.62 x 30.12 cm)

# Accessories

## Customize Your Workstation

Choose from a selection of accessories to configure Trio for an array of care applications, medication management, and procedure support.



**Wire Basket**  
*Two Sizes*



**Access Pack**  
*Multiple Sizes*



**Notification Light**



**Printer Shelf**



**Forked Scanner Holder**



**Tablet Mount**  
*Multiple Options*



**Scanner Base Plate**



**Sanitizing Wipes Bracket**



**Document Scanner Shelf**

Visit [CapsaHealthcare.com](http://CapsaHealthcare.com) for more convenient accessories.



# Specifications & Options



## Specifications

<b>Footprint</b>	17"W x 18"D
<b>Starting weight (without battery)</b>	95.8 lbs
<b>Battery weights</b>	5.6-14.4 lbs
<b>Work surface height range</b>	33.5"-49.5"
<b>Keyboard height range</b>	24.25"-43.25"
<b>Monitor (center) height range</b>	45"-66.5"
<b>Primary work surface size</b>	17"W x 10.5"D
<b>Expanded work surface</b>	10.875"W x 9.175"D
<b>CPU cavity dimensions</b>	17"W x 13.25"D x 3"H

## Wrist Rest Color Options



Grey



Blue



Lavender

# Superior Service & Support

*Our driving purpose is to ensure our customers are receiving the best service and support to maintain the uninterrupted delivery of healthcare.*



## **Black Book Award**

Recognized in 2020 for the highest user satisfaction in a 3rd party research study

next  
Business day  
Parts

On-site  
support

2-Hour  
response  
time

## **SERVICE**

- We have you covered with 24/7 technical support and next business day service parts
- A complete commitment to 100% customer satisfaction
- Over 92% of customers would recommend Capsa Healthcare to their colleagues and peers
- Expert technical guidance, implementation assistance, and field service teams
- Worldwide team of service technicians and service partners



# Why Partner with Capsa Healthcare?

*250,000 Capsa point-of-care carts deployed worldwide*

## INNOVATION

- Over 20-years of continual computing workstation development and evolution
- Workstation features that deliver tangible benefits to IT and nursing
- Integrated, proven software to support fleet management

## QUALITY

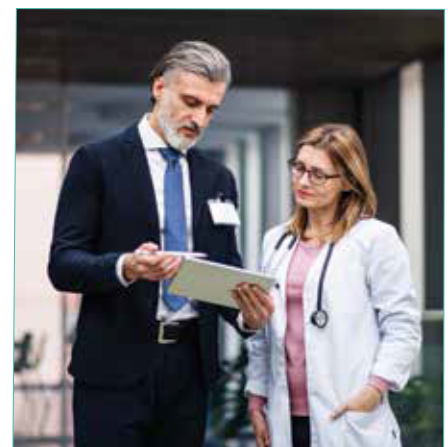
- Rigorous 55-point quality inspection to ensure first pass quality from the start
- Comprehensive bumper-to-bumper warranty
- Inventive approach to power system performance for maximum runtimes
- Safety tested to the latest edition UL and CE certification

## EXPERIENCE

- Dedicated product consultants that truly understand healthcare delivery at the point-of-care
- Sustained leadership position in superior clinical support equipment for over 50 years
- Knowledgeable customer care and service teams to support you 24/7

## SELECTION

- Complete flexibility in computing workstation configuration and set-up
- Hundreds of design options to create your medication and supplies storage platform
- Flexible power system meets virtually any runtime requirement
- Open-platform approach to accommodate computing hardware and peripherals



Elevating performance,

every day.



**CAPSAHEALTHCARE**



Certified ISO  
27001:2013



Certified ISO  
9001:2015

**ELLIOTT**  
DATA SYSTEMS, INC.  
A COMPLETE SOLUTIONS COMPANY

FOR MORE INFORMATION

Kris Mathesen

888-345-8511

[kmathesen@elliottdata.com](mailto:kmathesen@elliottdata.com)

<https://www.healthcare.elliottdata.com>