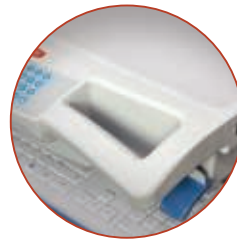


M38e



The **NEW M38e** from Capsa Healthcare is an evolution of the most proven point-of-care computing cart in healthcare. With updated features that provide superior ergonomics, enhanced ease-of-use, and expanded storage flexibility, the M38e maximizes clinical efficiency and elevates the performance of your health IT program.

- 18% smaller profile glides through tight care settings
- 10% larger work area with additional 100 square inch expandable surface feature
- 25% increase in battery runtime for improved uptime performance
- Up to 24% larger CPU storage area affords tech organization



Comfortable two-position handles simplify mobility



Intuitive locking and security system



Integrated storage pods and protective document cover

Power System	Non-Powered	AC Powered Lithium
Target Run-Time (typical configuration):	Laptop battery only	9-12 Hours/Charge
Charge Time from Empty:	Laptop charge time only	2.5 Hours
Battery Life Cycles:	N/A	2500+
Recommended Technology:	Laptop (up to 15" screen)	Laptop (folded), thin client, or All-In-One PC

Optional Accessories



Access Pack
for med
cups, tape
and alcohol
wipes and/or
scanner holder



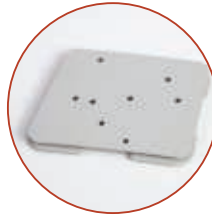
Infection
Control
Wipes
Bracket



Printer
Shelves



Forked
Scanner
Holder



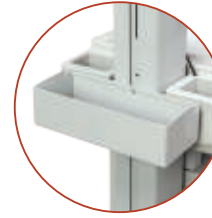
Barcode
Scanner Shelves
and Scanner
Holder Options



Wire
Basket



Waste
Container



Zebra
Printer
Holder

Check with your Capsa Healthcare regional sales manager about these and more accessories specific to your chosen point-of-care solution.

Bin Configurations



FG9M38-11



FG9M38-33



FG9M38-12



FG9M38-23



FG9M38-22



FG9M38-DD



FG9M38-13



FG9M38-QQ



Pharmacy Robot
Envelope Drawer

Non-locking supply bins also available

Drawer Options

Flexibility to configure workstation with storage drawers in 3" or 6" depths



3" Drawer
Electronic lock or non-locking



2-3" Drawers
Electronic lock or non-locking



6" Drawer
Electronic lock

Model Options



M38e
Document Model



M38e
XP Model



M38e
RX Model



M38e
Laptop Model

General Specifications:

- Top Work Surface Size: 19.6" w x 10.5" d
- Casters: Choose from 4" or 5" standard or directional casters
- Choose from manual or electronic height adjustment
- Adjustable height, tilt/swivel monitor mount and keyboard tray options
- Enhanced lighting features to assist with navigating and working in darkened areas
- Intuitive locking and security system