



VAST 2

View, Search, Control,
Integrate



Dashboard · Video Wall Solution · Add-on Solutions
MAC & Windows Client · Thumbnail & Smart Search

VIVOTEK's VAST 2 is an easy to use IP video management software (VMS). To meet users' real-world needs, it comes with exciting advancements such as easy operation on single or multiple monitors, custom layout to fit both in corridor and panorama format, rapid export of multi-channel video and acquiring VCA analytics with integrated cameras.

VAST 2 supports smart search and thumbnail search for advanced video search applications. Smart search provides users to easily set critical areas with a custom zone setting. Thumbnail search produces the snapshot preview to reduce the chance of selecting the wrong image. Both ways allow for smarter and quicker searches of specific events. To efficiently solve users' problems and system bugs, VAST 2 provides an automatic problem feedback mechanism to directly connect to VIVOTEK's FAE system. Any feedback will be handled instantly.

Utilizing automatic configuration wizards, VAST 2 can significantly reduce the time and cost of installing multiple camera surveillance systems. With more advanced setup features such as logical tree, camera configuration, archive management and recording schedule backup solutions, VAST 2 provides easy and intuitive UI with rich functionality to meet the needs of any customer. For efficient video management, VAST 2 also provides multi-layered, interactive 2.5D maps, and sophisticated alarm management. Furthermore, VAST 2's add-on solutions include failover protection, a transportation solution with GPS coordinates, transaction solutions with POS integration and Data Magnet integration solutions. All of these features combine to make VAST 2 the perfect VMS for use in retail, banking, transportation, and industrial applications.

Key Features

- Easy to Support Multi-Monitor as Tabs
- Windows Active Directory Integration
- Automatic Problem Feedback Mechanism
- Add-on Solutions: Failover, Transportation, Transaction and Data Magnet Integration
- Auto Streaming Size for Client Application
- Multiple Fisheye Dewarp Modes Support
- Custom Layout to Fit Different Camera Types
- Full Screen View
- Advanced Search (Smart & Thumbnail Search)
- Evidence Lock
- Multi-Video Export with Custom Layouts
- Log/Alarm Search & Export
- All New Matrix for Video Wall Solution
- Counting Solution Integrate with VCA Report/Counting Cameras
- Device Packs for Extending New VIVOTEK Cameras
- Panoramic PTZ Support

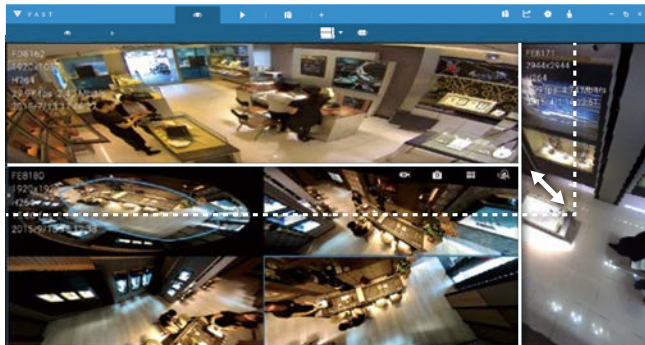
New Features

- Dashboard for System Overview
- MAC Client Supported
- User Management Enhancement
- Wiper Blade Control
- Change Google MAP API Key
- Setup Record by Each Event Type
- View Settings for View Cell
- System Status Display

Highlight Features

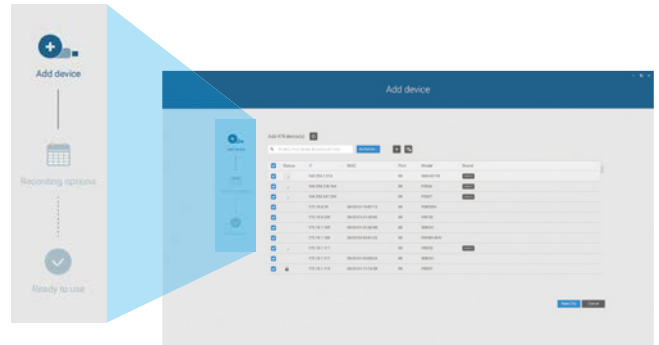
Intuitive UI Design

Direct intuitive custom layout adjustment and fisheye ROI control for better security management experience.



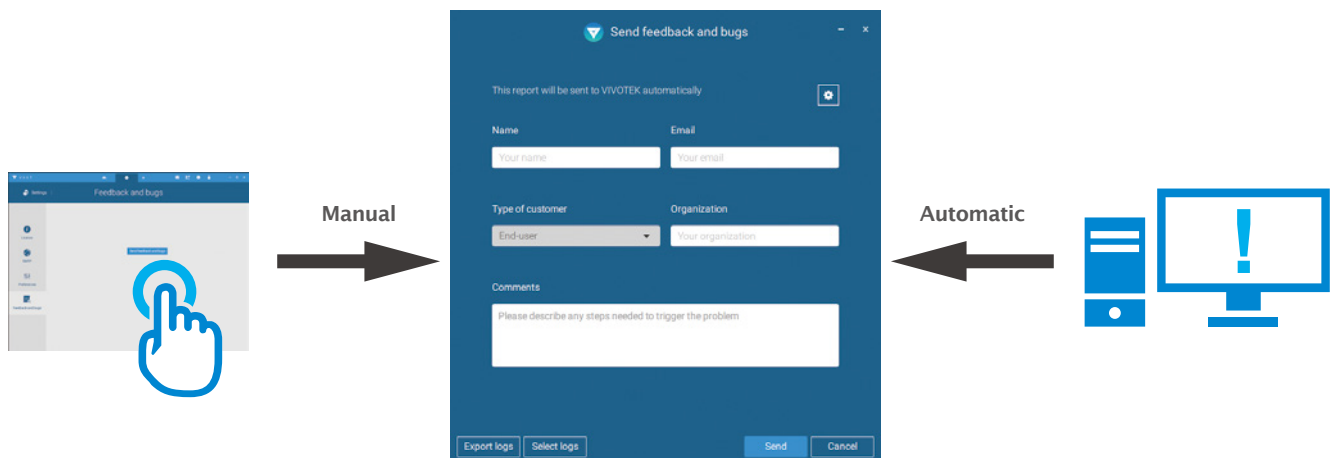
Auto Setup

Easy configuration through a fully automated process. Saves user's time and cost to install surveillance devices.



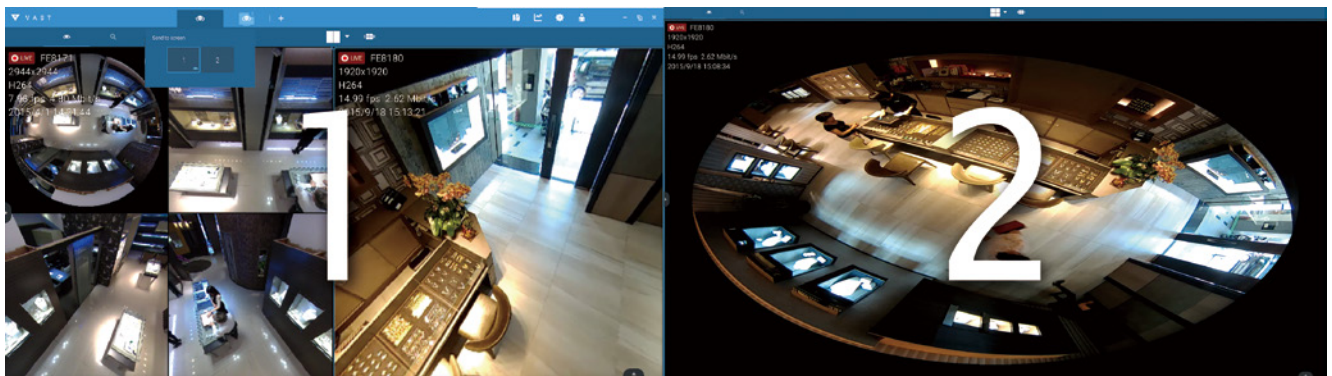
Problem Feedback Mechanism

Quick detect system problem and feedback to VIVOTEK's FAE system via automatic popup or manual operation.



Multi-Monitor & Tabs

Manage unlimited tasks with multiple screens for intuitive and easy surveillance.



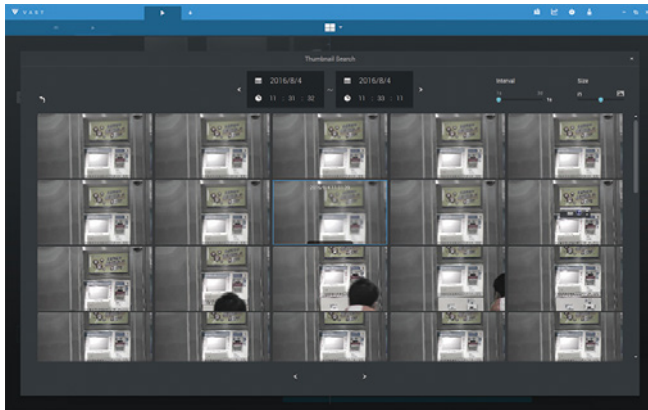
Screen 1

Screen 2

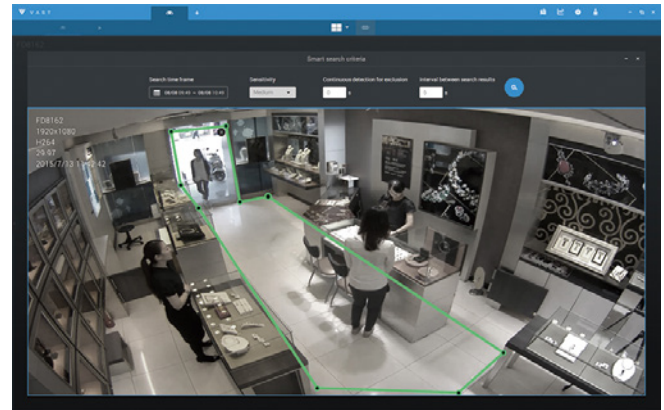
Highlight Features

Advanced Search

Efficiently search suspicious video and specific events with thumbnail view and smart search.



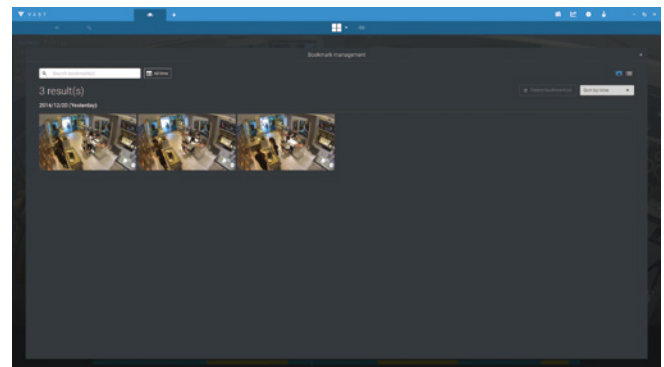
Thumbnail Search



Smart Search

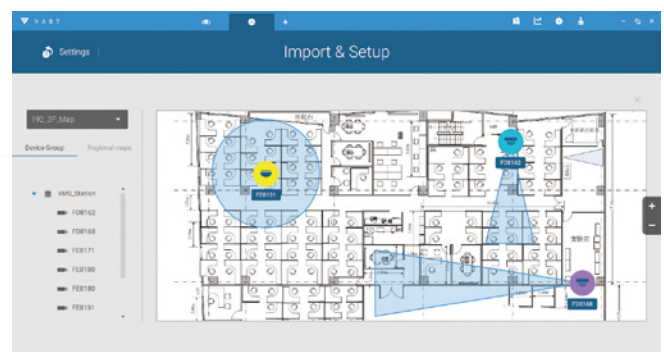
Evidence Lock

Manually extend the retention time for video recordings and manage a high number of investigation scenarios.



2.5D Visualization eMap

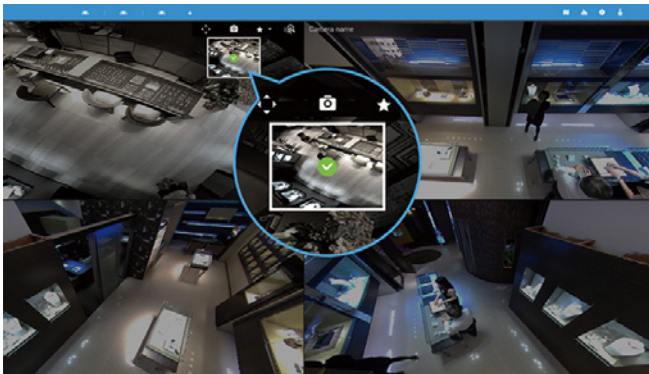
Multiple layers and camera's FOV views allow users instantly to pinpoint a selected camera located on the map.



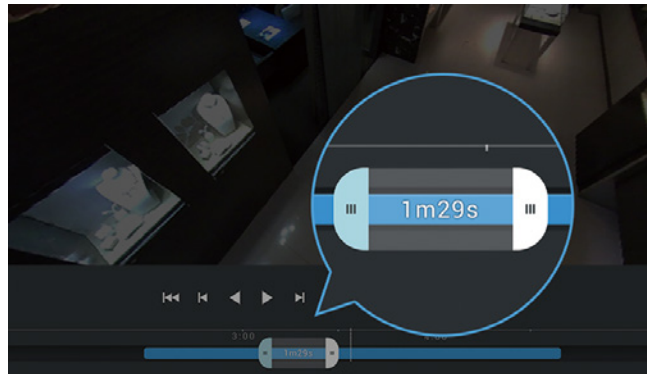
Highlight Features

Export Evidence

Easily export multiple video recordings with custom layouts in a specific time period or instant snapshot with a fast click.



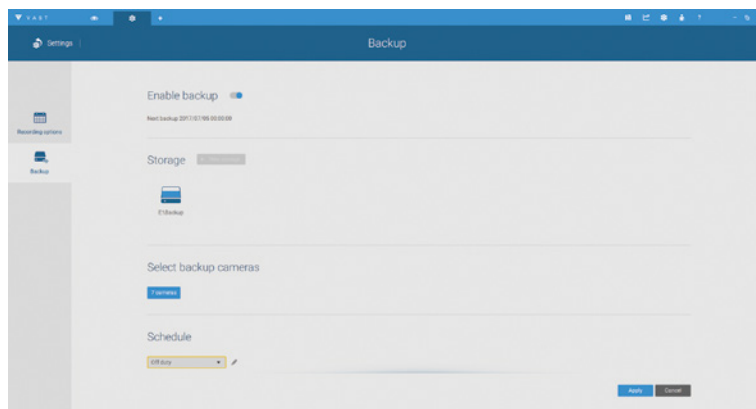
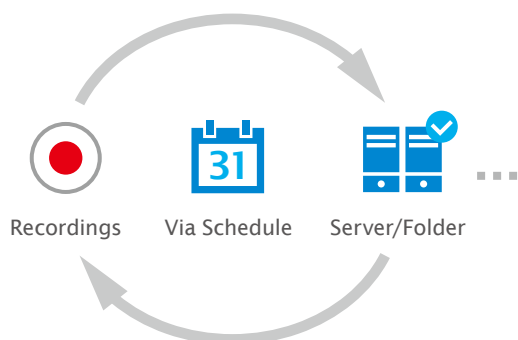
Snapshot



Video

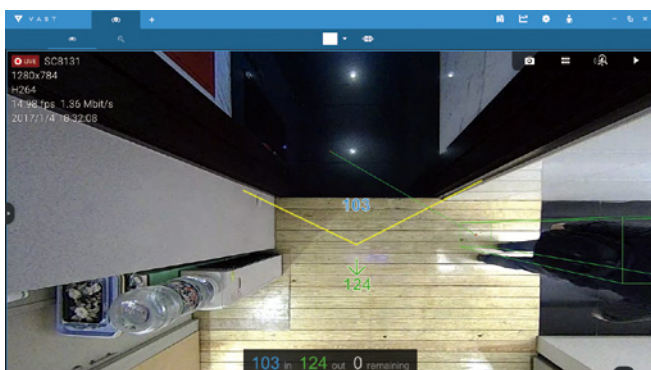
Schedule Backup

Automatically backs up the recording video clip to another network storage device.

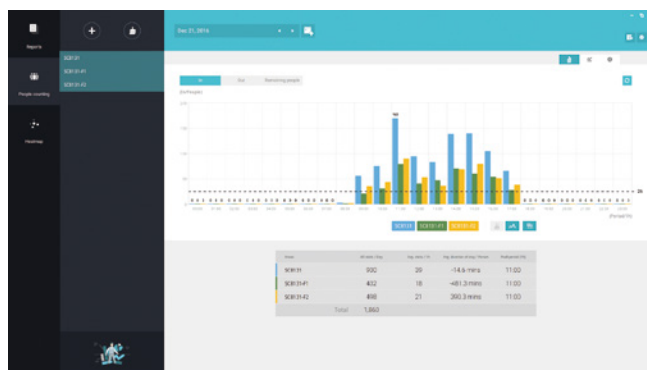


VCA Report

Integrate VIVOTEK's intelligence cameras to provide visual reports including video feedback, tables and charts.



Counting LiveView



Counting Report

Add-on Solutions

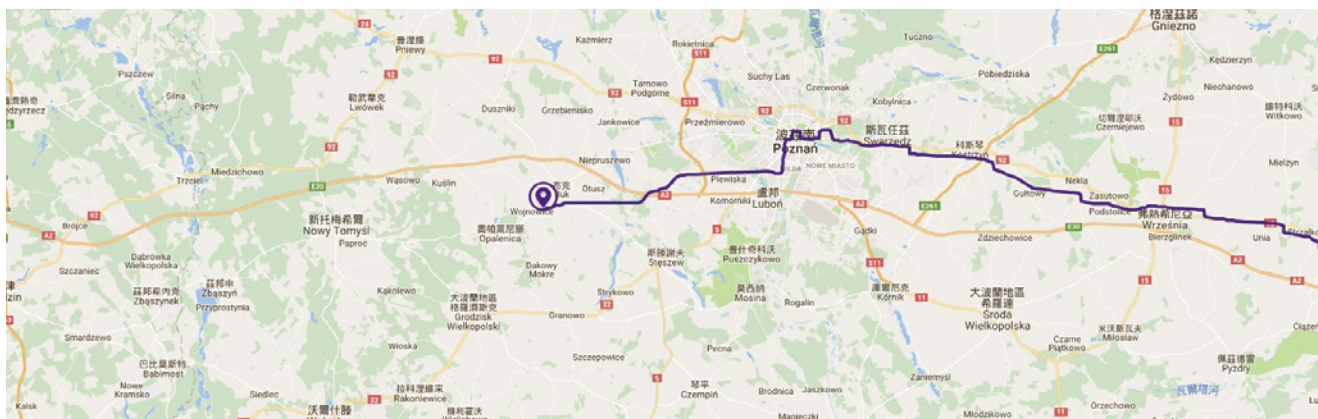
Failover Solution

Reliable backup system designed to transfer recording tasks from N sites to M sites upon the rare occurrence of disk or other malfunction.



Transportation Solution

VAST 2 can trace vehicles through information provided from GPS receivers, track vehicles' real-time location, and playback videos with recorded visited paths.



Transaction Solution

Retains all transaction details including not only POS data but also associated video footage to create deeper POS knowledge. Enter search conditions to filter transactions more easily.



Technical Specifications

Version	2.3
General	
Auto Wizard	Plug & Play Auto Setup
Max. Number of Cameras*	Unlimited
Max. Number of Servers*	Unlimited
Max. Number of Clients	Unlimited
Support OS	Windows 10, 8, 7 Windows Server 2012, 2016
Mobile Support	iViewer (iOS/Android)
Virtual Matrix Supported*	VAST 2 Matrix
Tabs Support*	Supported
Devices Pack	Ver. 5.9.206

LiveView (Local Display)

Max. Channels*	64-channel per monitor (Supports up to 8 Monitors)
Layout	Equal: 1x1, 2x2, 3x3, 4x4, 5x5, 6x6, 7x7, 8x8 Panorama: 1P+6, 2P, 2P+3, 3P Focus: 1+12, 1+16, 1+3, 1+5, 1+7, 1+9, 2+8 Vertical: 1V+6, 2V+2, 2V+3, 3V, 3V+4, 4V, 4V+4, 5V Single Layout Display
Custom Layout	Supported
Layout Configuration Saving	Supported
Layout Rotation	Supported
Stream Application	Stream Selection & Auto Stream Size
View Application	Drag & Drop Remote I/O Control PiP (Digital Zoom) Instant Playback Video Display Mode (Aspect Ratio & Camera Information) Metadata Display (VCA, POS and Data Magnet)
Fisheye Dewarp Mode	1O, 1P, 1R, 1O3R, 4R, 2P, 4R Pro, 1O8R
Fisheye Auto-Pan	Supported
Wiper Blade Control	Supported

Playback

Max. Channels*	64-channel per monitor (Supported monitor depends on PC decoding efficacy)
----------------	---

Layout	Equal: 1x1, 2x2, 3x3, 4x4, 5x5, 6x6, 7x7, 8x8 Panorama: 1P+6, 2P, 2P+3, 3P Focus: 1+12, 1+16, 1+3, 1+5, 1+7, 1+9, 2+8 Vertical: 1V+6, 2V+2, 2V+3, 3V, 3V+4, 4V, 4V+4, 5V Single Layout Display
Custom Layout	Supported
Playback Mode	Asynchronous & Synchronous
Playback Control	Play, Rewind, Pause, Stop, Next/Previous Frame, 1/64X ~ 64X Speed Control, Bookmark
Playback Timeline	Scale Adjustment Event Timeline Interval Display
Search Mode	Calendar, Alarm, Bookmark, Thumbnail, Smart & Transaction (POS), Log
Evidence Lock	Supported

Video

Video Format	MJPEG, MPEG4, H.264 AVC, H.264 SVC, H.265
Video Resolution	Up to 12 Megapixels

Audio

Audio Format	G.711, G.726, AMR, AAC
Audio Capability	Two-way Audio
Audio Control	Mute

Record

Recording Time (sec.)	Pre-Record: 3-15, Post-Record: 10-60
Recording Stream Type	Unicast
Recording Stream	Single
Recording Mode	Continuous, Event, Customized Schedule, Activity Adaptive Streaming
Recording Setting	Recycle (Depends on Storage Size)
Recording File Format	3GP
External Storage Recording	NAS (SMB & CIFS)

Alarm Management

Alarm Period (sec.)	Max. 30
Alarm Filter	Name, Time, Trigger Type (Camera/Substation/System)
Alarm Setting	Realtime System Notification
Schedule Type	Continuous, Schedule

Technical Specifications

Camera Source	Camera Disconnected, Camera DI, Camera DO, Crowd Detection, Field Detection (VCA), IR (Infrared), Line Crossing (VCA), Loitering (VCA), Motion Detection, Smart Motion Detection (Human Detection, Time Filter), PIR (Passive infrared), Recording Error, Stop Recording, Tampering Detection, Temperature, Video Loss (Video server only), ONVIF Motion Event, ONVIF DI/O, ONVIF Video Lost/Restore
Substation Source	NV Series NVR**: Abnormal G-sensor Motion, Speeding, GPS Disconnected ND Series NVR: Fan Status, Network Disconnected, Storage Failure, Storage Full NR Series NVR: Network Disconnected, Storage Failure, Storage Full
External Devices Event	DI/O (with I/O Box), TCP Message
Action	Start to record videos, Set DO status, Go to camera presets, Send HTTP requests, Send live streaming, Send Mail with Snapshot of Assigned camera(s), Go to E-Map and Alarm sound
Alarm State for Management	New, In Progress, False Alarm and Close
Alarm Result Export	.csv file
eMap	
Source	Import Picture & Folder
Adjustment	Vertical Angle Adjustment
Marked	Add, Remove, Direction Control, PTZ Control, FOV Control, LiveView & Playback
Event Notification	One or More Live Streaming
PTZ	
PTZ Control	Mouse Draw & Drag Control
PTZ Operation	Direction Control, Home, Zoom, Focus, Preset, Patrol (Group), Tracking, Pan, Stop, Speed
PTZ Operation Mode	Click to Move & Continuous Move
Export	
Snapshot	PNG & JPEG
Export File	3GP & EXE
Player	
Layout	Single & Multiple layout display
Custom Layout	According to playback export layout configuration
Playback Mode	Asynchronous & Synchronous
Playback Control	Play, Rewind, Pause, Stop, Next/Previous Frame, 1/64X ~ 64X Speed Control
Playback Timeline	Scale Adjustment Event Timeline Interval Display

Snapshot	PNG & JPEG Snapshot for Dewarped Fisheye Camera
Export Video	3GP
Backup	
Schedule	NAS (SMB & CIFS)
User Management	
Authentication	Basic Account/Windows AD Account
User Level	Administrator, Customized User
User Control	Client Permission (Operation & Configuration) & Camera Permission
System	
Dashboard	Supported
System Error List	Supported
Server System Status Display	CPU/Memory/Network
Client System Status Display	CPU/Memory
Date & Time	Sync PC
Network	SMTP & HTTPS
Language	Czech, English, French, German, Italian, Japanese, Korean, Persian, Portuguese, Russian, Spanish, Simplified Chinese, Traditional Chinese
Diagnostic Service	Supported
Log Management	Supported
MAC Client	Supported*
* Limitations of MAC Client 1. Video can only be exported in 3GP format. 2. AD login cannot be setup in MAC client. 3. MAC client only supports the joystick AJ001.	
Device Integration	
VIVOTEK's Camera	8000 & 9000 Series
VIVOTEK's NVR	ND & NR & NV Series (ND8321 excluded)
VIVOTEK's Software	VAST 2
Joystick	VIVOTEK Joystick AJ002
I/O Box	Advantech ADAM-6000 Series CHIYU CYT-133SC MOXA ioLogik E1210, E1211 and E1212
POS (Add-ons)	POSNET Lafresh Allsense (Implement in NVR, Searchable in VAST 2)

Technical Specifications

Camera Integration		VCA for Surveillance	Line Crossing Detection, Loitering Detection, Field Detection
Camera Insert	Manual & Search	VCA for Business Intelligence	People Counting
Video Source	VIVOTEK, ONVIF & RTSP Streaming	Advanced Features	
Basic Setting	User Name, Password & Camera Model Detection	VIVOTEK Exclusives	Panoramic PTZ Seamless Recording Standard VCA Integration (Line Crossing, Loitering, Field Detection and Crowd Detection) VCA Counting
Connection Setting	Configuration Protocol: HTTP, HTTPS Streaming Protocol: TCP, UDP, HTTP, HTTPS	Add-ons***	
Video Setting	Video stream, codec, resolution, maximum frame rate, I-frame period, video quality, FPS, Maximum bit rate	Failover Solution	N x M System Structure
Image Setting	Time stamp, Video title, Video orientation, Mount type (fisheye only), Color, Power line-frequency	3rd Party Integration	TCP Message, Data Magnet
Motion Detection Setting	Supported	Transportation Solution	Google Map and User-Defined Maps Support, Vehicle GPS Tracking, Tracks Playback
ONVIF Core Spec	Version 2.2 or above (request by project)	Transaction Solution	POS Terminal Integration (Serial or Network Ports), Live Printing of Transactional Data, Transaction Corresponding Video Search
ONVIF Stream	Video (H.264, MPEG4 & MJPEG) & Audio (G.711, One-way)	Integration Solution	TCP Trigger
ONVIF Control	PTZ Control (Up, Down, Left, Right & Zoom In/Out)		
ONVIF Discovery	Supported		
ONVIF Event	Motion Event, DI/O, Video Lost/Restore		
VCA Solution			

* Please refer to System Requirements Page (<http://www.vivotek.com/vast2/#system>)

** VIVOTEK's NV series NVR will be available soon.

*** Advanced license is required. (Additional charges may apply)

Support List

- VIVOTEK Network Camera: 8000 & 9000 Series
- VIVOTEK NVR: ND & NR & NV Series NVR (ND8321 excluded)
- VIVOTEK Software: VAST 2

System Requirements

VAST 2 Server

Server (Recording Channels)	Up to 64-CH	Up to 128-CH	Up to 256-CH
CPU	4th Generation Intel® Core™ i3 Processors or above		4th Generation Intel® Core™ i5 Processors or above
RAM	4 GB or above	8 GB or above	8 GB or above
Hard Drive (Enterprise Model Only) Suggestion	1 Volume Group*	2 Volume Group*	4 Volume Group*
Recording Throughput	1 Volume Group: Max. 200 Mbps**		
Network Interface Card	1000/100/10 Ethernet***		

* Volume group depends on total recording server throughput.

** Maximum number bitrate of cameras not to go over total recording throughput.

*** Please consider the throughput of viewing, recording and server's network.

VAST 2 LiveView & Playback

Client (Display Channels)	H.264, 720P, 2Mbps for Each Channel*	8-CH	16-CH	32-CH
	H.264, 1080P, 4Mbps for Each Channel**	6-CH	10-CH	18-CH
	H.265, 1080P, 4Mbps for Each Channel	3-CH	5-CH	9-CH
CPU		4th Generation Intel® Core™ i3 Processors	4th Generation Intel® Core™ i5 Processors	4th Generation Intel® Core™ i7 Processors
RAM***		4 GB or above	4 GB or above	4 GB or above
Graphics Processing Unit (GPU)****		Support Direct3D acceleration with 1GB Video RAM		
Network Interface Card		1000/100/10 Ethernet		

* Display requirements of a 3MP fisheye camera is equal to a 720P camera.

** Display requirements of a 5MP fisheye camera is equal to a 1080P camera.

*** Please use dual-channel setup for RAM.

**** Please update to the latest version of GPU driver.

If installing Server & Client in the same PC, overall loading of the PC will be evaluated.

- 60-day trial camera license (256-channels)
- 60-day trial add-on advanced license



Local Identification, Secure Access
& Accountability Solutions Provider

St. Louis, MO | Memphis, TN

1-888-345-8511

www.elliottdata.com

